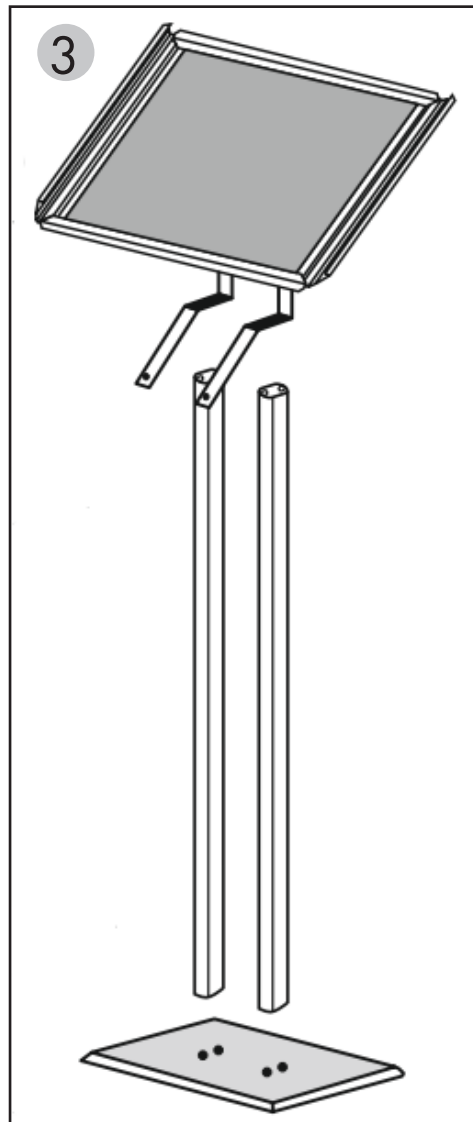
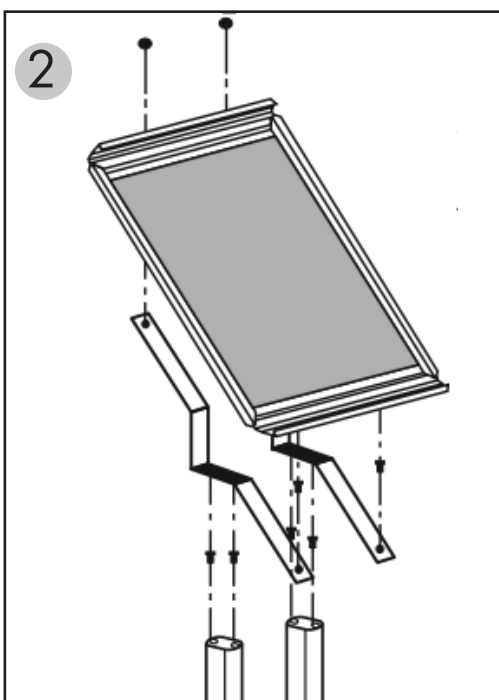
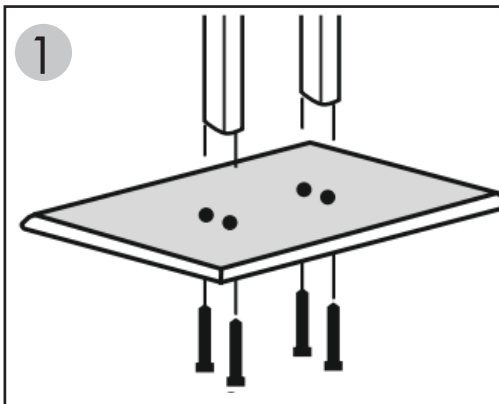




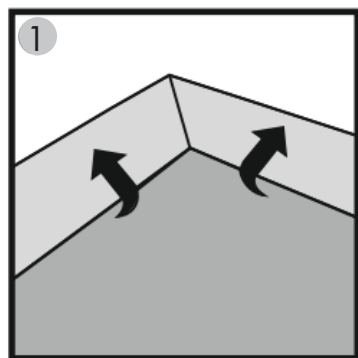
### Sign Stand with Snap-Frame UCMB521BLK, UCMB517BLK, UCMB32Y517, UCMB32Y521

Phillips Head Screwdriver  
Required (not included)

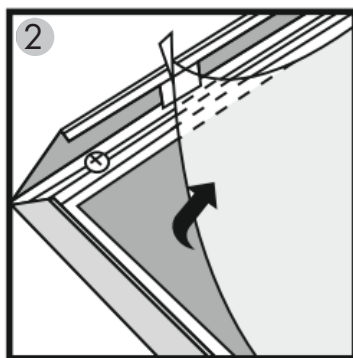
1. Attach both legs to the base with the provided bolts, screwing upwards through the base.
2. Attach a frame bracket to each post.
3. Align the pre-drilled holes under the top and bottom of the snap frame to the holes of the frame bracket. Attach snap frame to brackets.



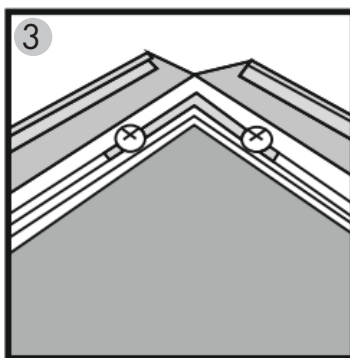
### Inserting Graphics Into Snap Frame



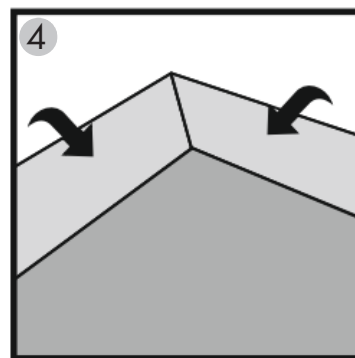
Snap open by lightly pulling upwards on the 4 inner sides.



Remove protective cover.



Place graphic, then place protective cover over graphic.



Snap each inner side closed to secure.